

# ALL WEATHER M2/M3

## HIGH SPEED DOORS



*Designed for applications with extreme pressure requirements, the DYNACO All Weather series is Energy Smart and protects your environments against winds, rain, snow, dirt and harsh temperatures. All Weather doors open and close quickly, improving traffic flow, while providing energy savings, employee comfort and environmental control. The doors are self-reinserting if accidentally dislodged from the side guides, yet are perfectly safe due to our soft bottom edge.*

### **FEATURES AND BENEFITS:**

**High Speed Operation:**  
Variable speed operation of up to 96" per second depending on opening size.

**Operates under extreme pressure:**  
All Weather doors are designed to withstand extreme wind and pressure up to 185 mph. No wind bars required.

**Patented Push Pull Technology:**  
Curtain drive system eliminates the need for weighted bottom bars or tension systems.

**Self Re-inserting:**  
Automatic re-insertion reduces maintenance and downtime, improves ergonomics.

**Safety Engineered:**  
Unique Soft Curtain design is forgiving and protects users from hard edge accidents.

**Patented Side Guides and Seal:**  
Patented side frame assembly provides virtually perfect seal while eliminating blade and brush systems.

**Advanced Drive Unit:**  
NEMA4 motor incorporates absolute encoder and dynamic braking, eliminating wear prone components.

**DYNALOGIX controller:**  
A state of the art self diagnostic controller is user friendly and easy to program.



**DYNACO. THE SAFEST CHOICE**

# ALL WEATHER M2/M3

## HIGH SPEED DOORS

### Specifics:

DYNACO All Weather doors have a maximum standard area of 702 ft<sup>2</sup>. Call DYNACO for maximum width and height dimensions. Speeds are variable to 96" per sec depending on size.

### Door operation:

DYNACO's gear driven "Push-Pull" system positively drives the curtain through heavy wind loads while eliminating tension systems, wind stiffeners and bottom bars. Eliminating damage prone rigid components allows the use of a soft curtain design.

### Self re-inserting:

In the event of an impact, the door is designed to dislodge from the side guides and automatically return to the open position. This ergonomically advantageous feature eliminates manual intervention and eliminates down time.

### High wind resistance:

The unique and patented friction free side guide system is reinforced to provide operation of the door in wind pressure of up to 185 mph. depending on door size.

### Patented Guide and Seal Technology:

The patented side guides are formed of 1/8" thick galvanized steel with a spring loaded UHMW inner guide, which allows for movement and deflection under pressure. The inner guide profile perfectly matches the curtain "teeth" to form a near perfect perimeter seal. Wear and damage prone blade and brush systems are eliminated.

### Drive Unit:

DYNACO's NEMA 4 drive unit utilizes soft start/ stop technology, an absolute encoder and dynamic braking. Maintenance prone limit switches and brakes are eliminated.

### Safety Engineered:

Each door panel comes standard with our unique soft curtain, preventing lateral hard edge and other types of accidents. No stiffeners or rigid bottom bars to injure workers or damage equipment. Our wireless reversing edge and built-in infrared sensors protect against downward accidents.

### Control system:

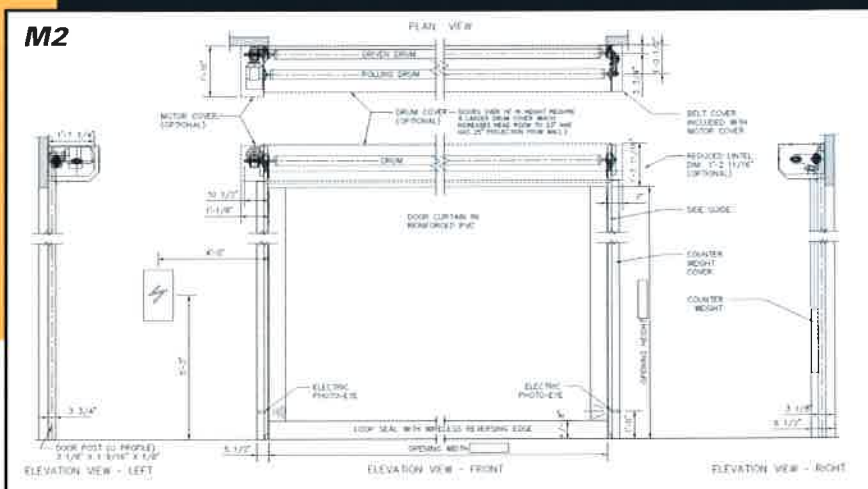
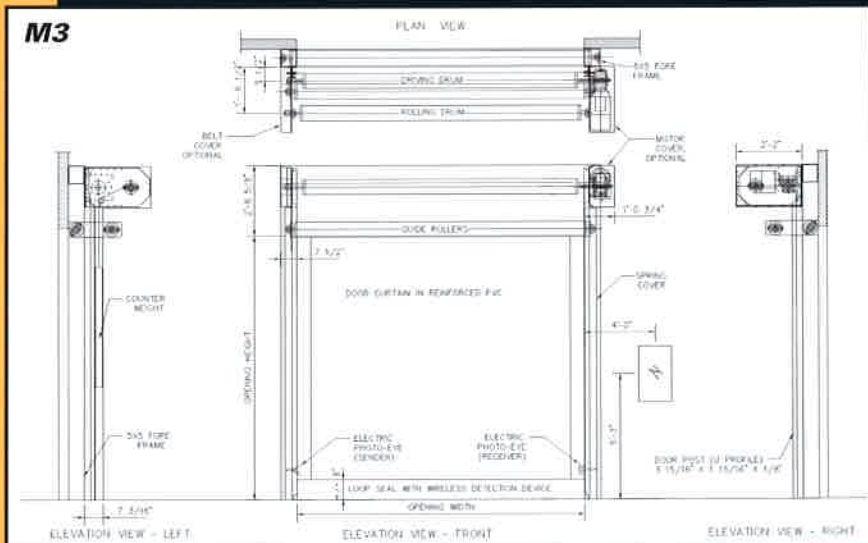
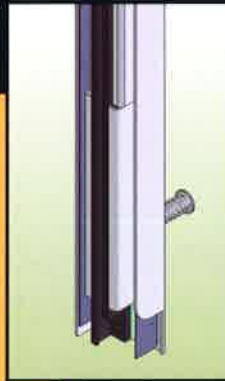
Our state of the art DYNALOGIX controller is user friendly and provides self diagnostic and programming functions. A view window in the NEMA 4 enclosure lets you read door status on the multi character LCD screen. A rotary disconnect and push button are provided as standard.

### Door curtain:

27oz reinforced PVC vinyl, with your choice of color and vision. Optional 45 oz and Dynalumin daylight material is available.

### Warranty:

DYNACO backs its doors with the best warranty in the industry. 5 years unlimited cycles on the drive motor and 5 years on fabric workmanship. One year on balance of components.



DYNACO reserves the right to modify its product without prior notice.



**DYNACO. THE SAFEST CHOICE**

Call DYNACO for additional information • P: 1-800-459-1930 • F: 1-800-459-1960 • Email: [dynaco@dynacodoor.us](mailto:dynaco@dynacodoor.us) • [www.dynacodoor.us](http://www.dynacodoor.us)